

**Dairy Farmers of New Brunswick
Milk Matters: Production and Payment Summary Report for August 2022**

Quota Exchange for September, 2022

	Price in Dollars	# of Sellers	Kgs Offered By Sellers	Total Cum. kgs	Difference Between Sellers/Buyers	Total Cum. kgs	Kgs Wanted By Buyers	# of Buyers
QESP	\$24,000.00		28.9	28.9	488.7	517.6	517.6	
TOTALS		4	28.9				517.6	31

QESP = Quota Exchange Selling Price

QESP = Le prix de vente de quota

28.9 of 517.6 kgs wanted at or above the Quota Exchange Selling Price of \$24,000.00 were purchased.

28.9 des 517.6 kilos demandé au prix de vente de \$24,000.00 ou au dessus ont été acheté. Il y avait un total de 28.9 kgs proposés à la vente et le total des offres pour l'achat de 517.6kgs.

There was a total of 28.9 kgs offered for sale and total bids to purchase of 517.6 kgs.

Next Exchange closes at 4:00 p.m., Monday October 3, 2022

Results are available Thursday October 6, 2022

Month	Sept	Aug	Jul	Jun	May	Apr	6 month avg.
Clearing Price	\$24,000	\$0	\$0	\$24,000	\$24,000	\$0	\$24,000
Kgs on Exchange	28.9	.0	.0	5.4	3.0	.0	12.4
Kgs by Transfer	.0	149.2	96.6	259.0	77.3	79.7	110.3

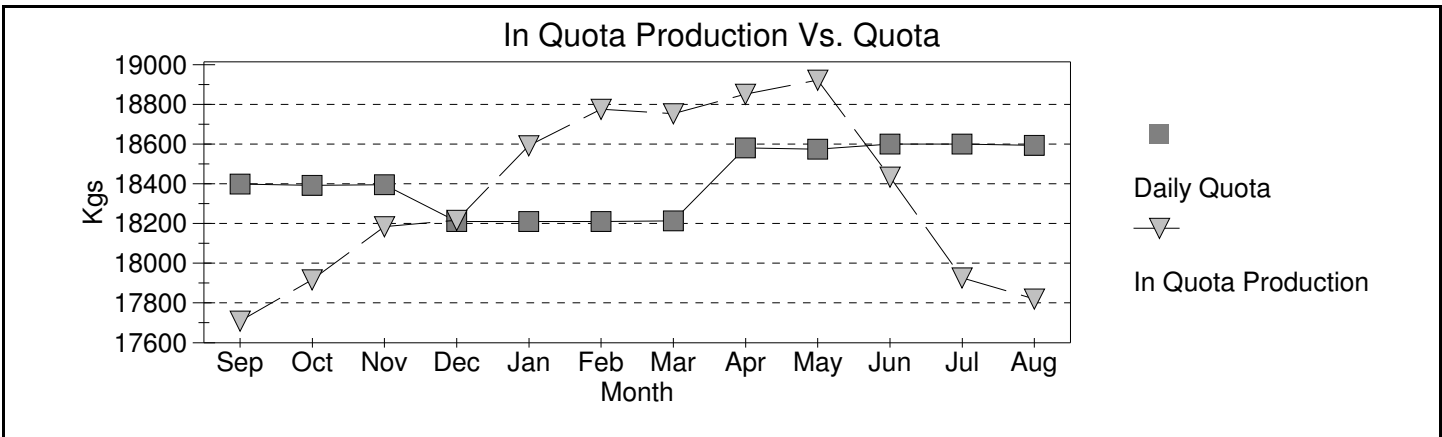
NB Domestic Milk Pool

Over Quota	BF Kg	BF \$/kg	BF \$	PT Kg	PT \$/kg	PT \$	OS Kg	OS \$/kg	OS \$
August 2022	942	-\$2.7327	(\$2,575)	741	-\$1.9107	(\$1,416)	1,264	-\$0.3917	(\$495)
12 Months	4,170	-\$2.7325	(\$11,393)	3,186	-\$1.9106	(\$6,087)	5,534	-\$0.3917	(\$2,167)
SNF >2.3									
August 2022				1,496	\$0.0000	\$0	2,794	\$0.0000	\$0
12 Months				7,518	\$0.0000	\$0	14,099	\$0.0000	\$0
SNF 2.0<>2.3									
August 2022				36,916	\$3.8317	\$141,451	68,275	\$3.8317	\$261,608
12 Months				359,550	\$3.7443	\$1,346,264	651,280	\$3.7490	\$2,441,621
Domestic Market									
August 2022	551,420	\$12.8250	\$7,071,958	389,170	\$10.7405	\$4,179,881	711,062	\$9.9000	\$639,956
12 Months	6,686,813	\$12.1541	\$81,272,437	4,789,083	\$10.0579	\$48,167,993	8,526,135	\$9.9000	\$7,673,521

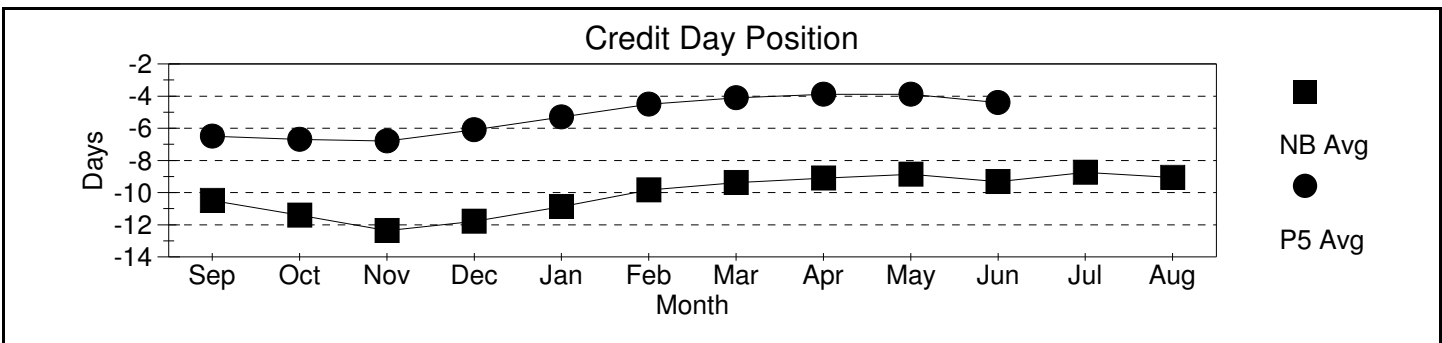
Production & Payment

Revenue	\$/HL	BF \$	PT \$	OS \$				Total Paid \$
August 2022	\$90.57	\$7,069,383	\$4,319,916	\$901,068				\$12,290,367
12 Months	\$89.06	\$81,261,043	\$49,508,170	\$10,112,975				\$140,882,188
Deductions	Transport	Promotion	Admin	Lab Fee	Research Levy	Total Ded Per HL		Total Deductions
	Per HL	Per Kg of Total Solids						
August 2022	\$3.83	\$0.1139	\$0.0570	\$0.0100	\$0.0016	\$6.20		\$842,673
12 Months	\$3.18	\$0.1139	\$0.0570	\$0.0100	\$0.0016	\$5.59		\$8,877,742
Quality	Somatic Cell Count	Standard Plate Count	Lab Past. Count					Rejected Loads
August 2022	206,480	11,834	177					0
12 Months	171,006	7,584	169					0
Production & Component Tests	Production Volume	Butter Fat	Protein	Lactose & O.S.	Total solids	SNF Ratio		
August 2022	13,596,055	4.0627	3.1504	5.7619	12.9749	2.1937		
12 Months	158,303,913	4.2267	3.2591	5.8097	13.2955	2.1456		

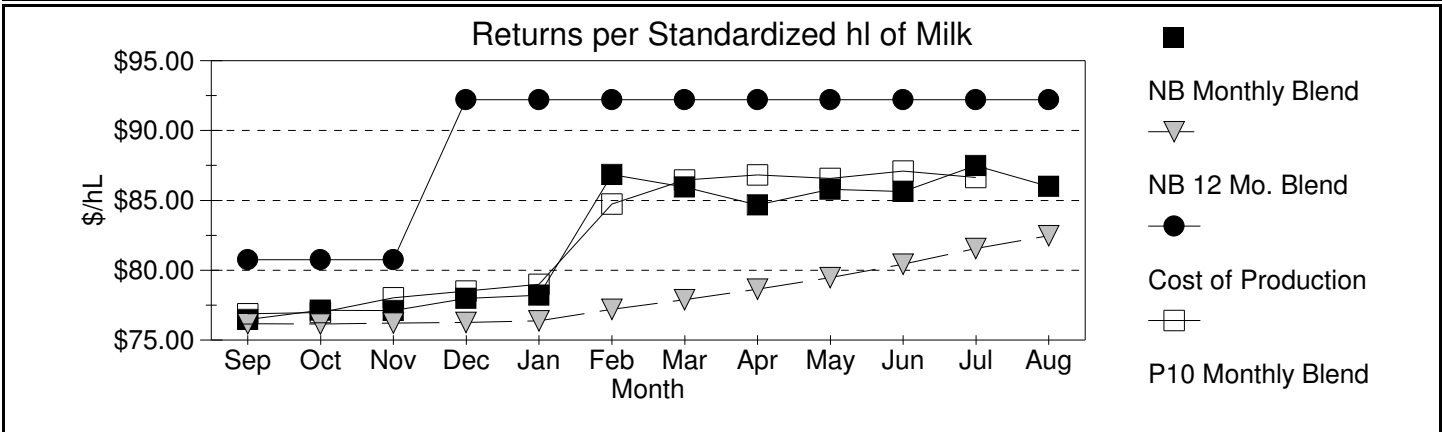
Milk Matters: Production and Payment Summary Report for August 2022



Credits



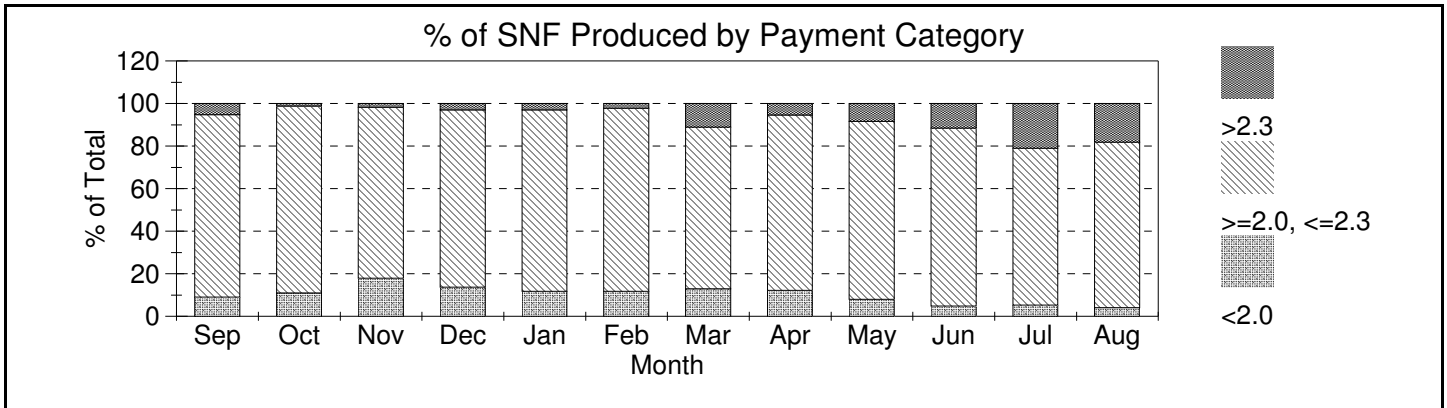
Month	Sep	Oct	Nov	Dec	Jan	Feb	Mar	Apr	May	Jun	Jul	Aug
Incentive Days Issued	2.00	1.00	2.00	0.00	0.02	0.06	1.06	1.06	1.06	1.06	0.07	1.06
Incentive Days Used	0.60	0.44	0.93	0.00	0.01	0.05	0.72	0.64	0.65	0.55	0.05	0.39
Days Over Quota	0.00	0.05	0.01	0.00	0.00	0.04	0.01	0.01	0.02	0.00	0.03	0.05
Days Lost	-0.29	-0.36	-0.39	-0.44	-0.14	-0.07	-0.07	-0.10	-0.14	-0.10	-1.54	0.00
Days Exchanged	1.04	0.90	1.14	0.77	0.93	0.94	1.25	1.11	0.96	1.15	0.96	0.17
Credit Exch Clearing Price	\$4.75	\$3.99	\$4.00	\$3.75	\$5.43	\$7.78	\$7.78	\$5.00	\$3.00	\$3.11	\$2.50	\$0.99



Month	Sep	Oct	Nov	Dec	Jan	Feb	Mar	Apr	May	Jun	Jul	Aug
SNF 2.00-2.30 \$/kg	\$2.81	\$2.81	\$3.17	\$3.44	\$3.66	\$3.92	\$4.09	\$4.18	\$4.20	\$4.21	\$4.21	\$3.83

A standardized hl of milk contains 3.60 kg/hl BF, 3.23 kg/hl PT and 5.69 kg/hl LOS

SNF Policy



SNF/BF: Avg Ratios

Month	Sep	Oct	Nov	Dec	Jan	Feb	Mar	Apr	May	Jun	Jul	Aug
< 2	1.92	1.91	1.92	1.91	1.91	1.92	1.92	1.93	1.92	1.91	1.93	1.89
2 < > 2.3	2.17	2.14	2.14	2.14	2.14	2.15	2.15	2.16	2.16	2.17	2.18	2.18
> 2.3	2.36	2.34	2.31	2.33	2.33	2.31	2.33	2.36	2.34	2.36	2.34	2.34
Provincial	2.15	2.12	2.10	2.12	2.12	2.12	2.14	2.14	2.16	2.18	2.20	2.19