

**Dairy Farmers of New Brunswick
Milk Matters: Production and Payment Summary Report for May 2022**

Quota Exchange for June, 2022

	Price in Dollars	# of Sellers	Kgs Offered By Sellers	Total Cum. kgs	Difference Between Sellers/Buyers	Total Cum. kgs	Kgs Wanted By Buyers	# of Buyers
QESP	\$24,000.00		5.4	5.4	584.0	589.4	589.4	
TOTALS		2	5.4			589.4	589.4	35

QESP = Quota Exchange Selling Price

QESP = Le prix de vente de quota

5.4 of 589.4 kgs wanted at or above the Quota Exchange Selling Price of \$24,000.00 were purchased.

5.4 des 589.4 kilos demandé au prix de vente de \$24,000.00 ou au dessus ont été acheté. Il y avait un total de 5.4 kgs proposés à la vente et le total des offres pour l'achat de 589.4kg.

There was a total of 5.4 kgs offered for sale and total bids to purchase of 589.4 kgs.

Next Exchange closes at 4:00 p.m., Friday July 1, 2022

Results are available Wednesday July 6, 2022

Month	Jun	May	Apr	Mar	Feb	Jan	6 month avg.
Clearing Price	\$24,000	\$24,000	\$0	\$0	\$0	\$24,000	\$24,000
Kgs on Exchange	5.4	3.0	.0	.0	.0	2.0	3.5
Kgs by Transfer	.0	77.3	79.7	.0	.0	188.8	57.6

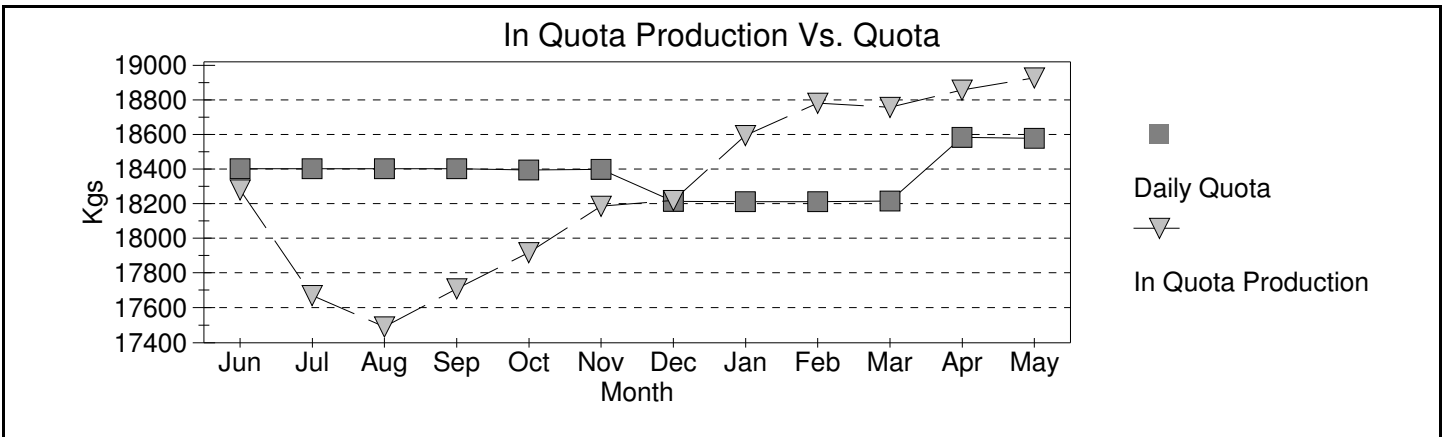
NB Domestic Milk Pool

Over Quota	BF Kg	BF \$/kg	BF \$	PT Kg	PT \$/kg	PT \$	OS Kg	OS \$/kg	OS \$
May 2022	452	-\$2.7327	(\$1,236)	338	-\$1.9107	(\$646)	599	-\$.3917	(\$235)
12 Months	4,104	-\$2.0302	(\$8,333)	3,165	-\$1.3986	(\$4,426)	5,553	-\$.2868	(\$1,592)
SNF >2.3									
May 2022				676	\$0.0000	\$0	1,283	\$0.0000	\$0
12 Months				6,343	\$0.0000	\$0	11,803	\$0.0000	\$0
SNF 2.0<>2.3									
May 2022				33,507	\$4.2036	\$140,850	60,760	\$4.2036	\$255,413
12 Months				351,306	\$3.2914	\$1,156,303	636,789	\$3.2863	\$2,092,693
Domestic Market									
May 2022	585,706	\$12.8665	\$7,535,993	418,328	\$10.2256	\$4,277,659	749,220	\$9.9000	\$674,298
12 Months	6,664,281	\$11.5769	\$77,151,836	4,768,702	\$9.8801	\$47,115,390	8,502,436	\$9.9000	\$7,652,193

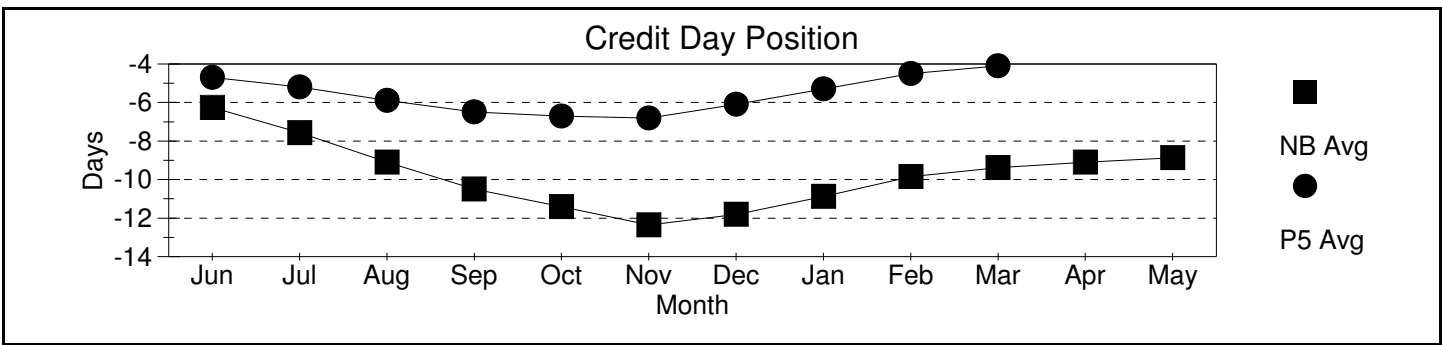
Production & Payment

Revenue	\$/HL	BF \$	PT \$	OS \$				Total Paid \$
May 2022	\$92.51	\$7,534,757	\$4,417,863	\$929,477				\$12,882,096
12 Months	\$85.92	\$77,143,504	\$48,267,267	\$9,743,293				\$135,154,064
Deductions	Transport	Promotion	Admin	Lab Fee	Research Levy	Total Ded		Total
	Per HL	Per Kg of Total Solids				Per HL		Deductions
May 2022	\$3.27	\$1.139	\$0.0570	\$0.0100	\$0.0016	\$5.69		\$793,526
12 Months	\$2.95	\$1.139	\$0.0581	\$0.0095	\$0.0016	\$5.36		\$8,473,825
Quality	Somatic Cell Count	Standard Plate Count	Lab Past. Count					Rejected Loads
May 2022	165,693	6,107	116					0
12 Months	171,700	6,889	149					0
Production & Component Tests	Production Volume	Butter Fat	Protein	Lactose & O.S.	Total solids	SNF Ratio		
May 2022	13,937,052	4.2058	3.2493	5.8252	13.2802	2.1576		
12 Months	157,413,083	4.2362	3.2586	5.8169	13.3118	2.1424		

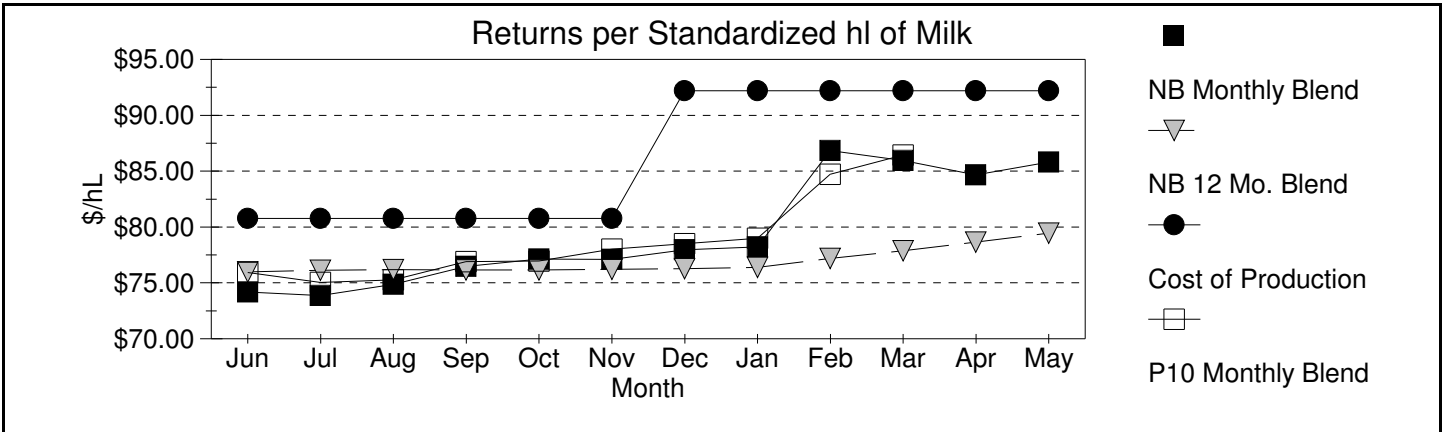
Milk Matters: Production and Payment Summary Report for May 2022



Credits



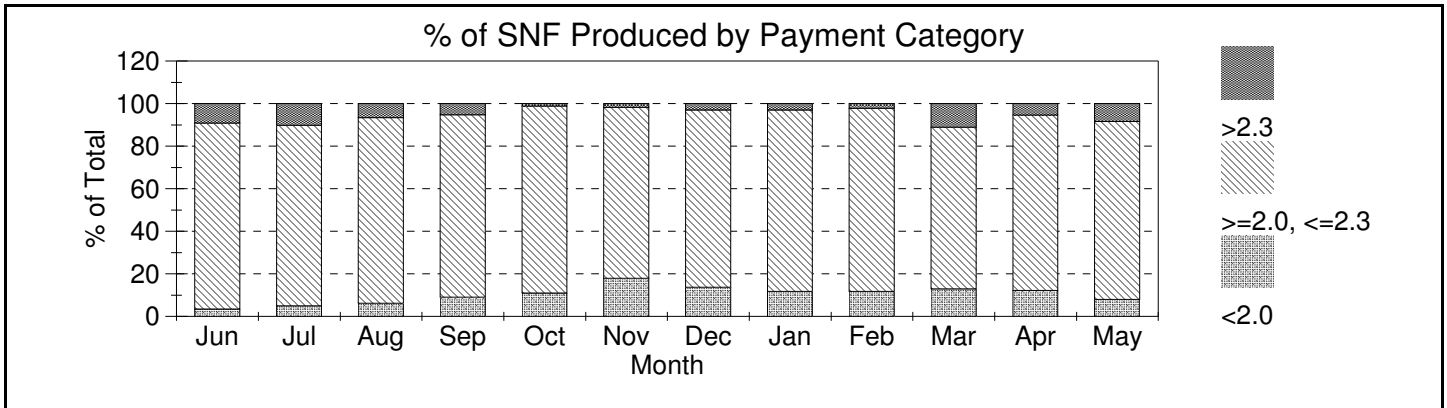
Month	Jun	Jul	Aug	Sep	Oct	Nov	Dec	Jan	Feb	Mar	Apr	May
Incentive Days Issued	1.00	1.00	1.00	2.00	1.00	2.00	0.00	0.02	0.06	1.06	1.06	1.06
Incentive Days Used	0.46	0.33	0.32	0.60	0.44	0.93	0.00	0.01	0.05	0.72	0.64	0.65
Days Over Quota	0.04	0.02	0.02	0.00	0.05	0.01	0.00	0.00	0.04	0.01	0.01	0.02
Days Lost	-0.10	-0.20	-0.28	-0.29	-0.36	-0.39	-0.31	-0.14	-0.07	-0.07	-0.10	-0.14
Days Exchanged	0.53	0.55	0.80	1.04	0.90	1.14	0.77	0.93	0.94	1.25	1.11	0.96
Credit Exch Clearing Price	\$4.55	\$3.01	\$5.01	\$4.75	\$3.99	\$4.00	\$3.75	\$5.43	\$7.78	\$7.78	\$5.00	\$3.00



Month	Jun	Jul	Aug	Sep	Oct	Nov	Dec	Jan	Feb	Mar	Apr	May
SNF 2.00-2.30 \$/kg	\$2.50	\$2.55	\$2.60	\$2.81	\$2.81	\$3.17	\$3.44	\$3.66	\$3.92	\$4.09	\$4.18	\$4.20

A standardized hl of milk contains 3.60 kg/hl BF, 3.23 kg/hl PT and 5.69 kg/hl LOS

SNF Policy



SNF/BF: Avg Ratios

Month	Jun	Jul	Aug	Sep	Oct	Nov	Dec	Jan	Feb	Mar	Apr	May
< 2	1.90	1.93	1.93	1.92	1.91	1.92	1.91	1.91	1.92	1.92	1.93	1.92
2 < > 2.3	2.18	2.18	2.17	2.17	2.14	2.14	2.14	2.14	2.15	2.15	2.16	2.16
> 2.3	2.35	2.38	2.36	2.36	2.34	2.31	2.33	2.33	2.31	2.33	2.36	2.34
Provincial	2.19	2.19	2.17	2.15	2.12	2.10	2.12	2.12	2.12	2.14	2.14	2.16